

SHEEP BREEDERS ROUND TABLE 2011

The Future is Bright, the Future is....

BIENNIAL CONFERENCE 4th–6th NOVEMBER 2011

At Eastwood Hall, Mansfield Road, Eastwood,
Nottingham, NG16 3SS

Chairman - Jonathan Barber Treasurer - Chris Lloyd Secretary - Liz Genever

Committee - Sam Boon, Huw Jones, Dy Webb, Siôn Aron Jones

Friday 4th November

13.00 Registration desk opens & check in available

14.00 Breeding Update

A series of informal presentations explaining changes to the Signet Sheepbreeder Service over the past year as well as breeding related technology transfer activities run by the devolved Levy Boards.

- Signet Update and EBLEX Technology Transfer - Sam Boon, Signet
- Signet New EBVs and Breeding Indexes - Kirsty Moore, EGENES
- Genomic EBVs in the UK dairy evaluations and new genomic work in beef - Mike Coffey, SAC
- New approaches to dealing with recessive genes - Huw Jones, KTN Biosciences
- Update on the Scottish Sheep Strategy - Alison Glasgow, Signet (on behalf of QMS)
- Update on the HHC Elite Ram Project - Dewi Hughes, HCC

15.30 Tea and coffee

16.00 Marketing Pedigree Rams

This interactive session will look at the ways that flocks can enhance their marketing strategy.

- Laura Dodds, Marketing Manager at HCC will talk about the principles of marketing and how these can be applied to pedigree rams
- Interactive exercises will help breeders to think about their own communications and marketing strategies.
- Matt Harding, PIC UK Ltd, '*Promoting the value of PIC genetics to our customers*' - ideas and inspiration from the pig sector.

Attendance of these two sessions is free to conference delegates, but please book your place with Signet on signet@eblex.ahdb.org.uk

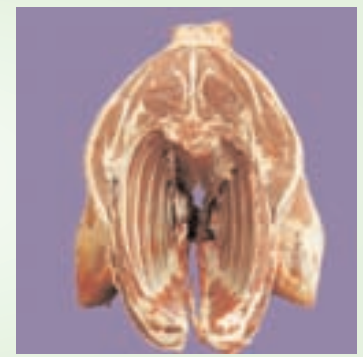
20.00 **Drinks Reception** – sponsored by EBLEX, HCC and QMS

20.30 **Conference Dinner,**

The After Dinner Speaker will be Robert Pichard, who is the Director General of the British Nutrition Foundation, the Chair of the consumer association, Which?, and a Visiting Professor at the Royal College of Agriculture.

For further information on Sheep Breeders Round Table please contact Karen Morris on 0247 647 8828 or Karen.morris@eblex.ahdb.org.uk





Saturday 5th November

- 9.00 Registration
- 9.15 Jonathan Barber – Chairman's Welcome
- 9.20 **1 : profitability**
Chaired by Kate Phillips, ADAS
- 9.25 **Gregor Ingram, Farmers Weekly Sheep Farmer of the Year 2010.**
Logie Durno Farm, Pitcaple, Aberdeenshire.
gregor.ingram@student.sac.ac.uk
- Profitability and sustainability for the next generation**
Farmers Weekly Sheep Farmer of the year competition identifies sheep producers who are striving for excellence. It was won in 2010 by the Ingram family. Gregor will be representing the family and will explain why they won. The Ingrams run Texel, Charollais and composite flocks, and sell performance recorded rams throughout the UK.
- 9.45 **John Vipond, Sheep Specialist, SAC, Penicuik.** john.vipond@sac.co.uk
- Ewe efficiency is a massive driver**
John will discuss the current efficiency of the ewe flock by looking at rearing percentage plus carcase weight trends. He will also explain why labour, ewe mature size and lamb survival need to be the main focus for a profitable sheep flock. And why breeding from ewe lambs will continue to be important.
- 10.05 **Stuart Ashworth, Head of Economic Services, QMS.** SAshworth@qmscotland.co.uk
- The Outlook for the Sheep Sector - What are the new trends?**
Breeding ewe numbers are stabilising in the UK, while they decline elsewhere. What is

the potential for the UK market? Stuart will discuss the developing market trends for sheep meat and offals. He will also touch on the wool market.

10.25 Discussion

10.45 Coffee

11.15 **2 : genetic improvement**
Chaired by Huw Jones, KTN Biosciences

11.20 **Alex Ball, Manager Southern Livestock RD&E, Meat and Livestock Australia and Sheep CRC.**
all@mlla.com.au

It's a lot of work, but has the industry seen any benefit yet?

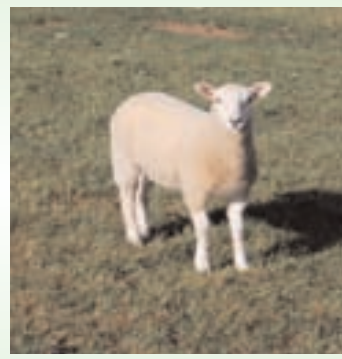
In recent years the Australian Sheep industry has been the focus for a number of exciting research projects through a number of initiatives including the establishment of the large Sheep Cooperative Research Centre (AUS\$ 111 million over 7 years). Alex will review the work that has been conducted and the benefits the industry has seen already from all the activity. He will also discuss the R&D priorities and outcomes for the next 5 years, and how the dynamics of the Australian Industry are shaping R&D policy and focus.

Sponsored by KTN Biosciences

12.15 Discussion

12.30 Lunch and opportunity to look at the posters





13.45 **3 : debate - All rams should be reared off forage**

Chaired by Chris Lloyd, EBLEX

13.50 **Peter Baber**, *Director of SIG and sheep breeder, Weir Park Farm, Christow.*
peter@baber.co.uk

For the motion - 'Rams evolved to perform off grass and we have messed it up'.

13.55 **Willie Thomson**, *Technical Sales Manager, Harbro Limited, Turriff, Aberdeenshire.*
willie.thomson@harbro.co.uk

Against the motion - 'To produce rams for sales we need some hard feed'.

14.00 **Will Haresign**, *Director of Teaching and Learning, University of Aberystwyth.*
wih@aber.ac.uk

For the motion - 'Performance testing of rams on concentrate diets is not in the best interest of commercial lamb producer'

14.05 **Bob Payne**, *Sheep breeder, Carr Head Farm, Hunshelf, Sheffield.*
bobandanne@handbanktexels.wanadoo.co.uk

Against the motion, 'Rams can not be sold off grass alone'.

14.10 Discussion

15.10 Coffee

15.40 **4 : an efficient supply chain**
Chaired by Richard Oates, OMS Scottish Sheep Strategy

15.45 Speaker TBC, Waitrose supplier

Being the face on the package
This talk will discuss the benefits of having a

working relationship with a retailer. It will also consider the impact on both businesses.

16.00 **Nick Davies**, *Group Agricultural Development Manager, Dunbia, Dungannon.*
ndavies@dunbia.com

How producer groups have changed?

Nick explains how Dunbia are working with producer groups so both parties can grow their businesses together. He will also discuss how the supply chain can make use of EID.

16.15 **Steve McLean**, *Agriculture Manager, M&S, London*
Steven.Mclean@marks-and-spencer.com

Working in partnership with the Supply Chain

Establishing a sustainable supply chain model that works for all parties - the successes and challenges encountered to date.

16.30 **Kim Matthews**, *Meat scientist, EBLEX - AHDB*
kim.matthews@eblex.ahdb.org.uk

Beyond VIA

Kim will discuss the pros and cons of the EUROP grid and VIA, and will also look to the future to see what technologies are coming to measure both yield and quality.

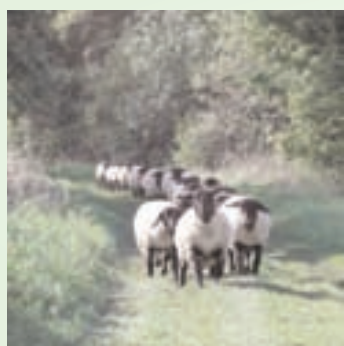
17.10 Discussion

17.30 **Poster Session**
Authors will be standing by their posters.

19.15 **Wine Reception**
Sponsored by SAC

20.00 **Dinner**





Sunday 6th November

9.20 5 : research

Chaired by Siôn Aron Jones, HCC

9.25 **Lutz Bunger**, *Researcher, SAC, Easter Bush, Midlothian. lutz.bunger@sac.ac.uk*

How to get genetic markers adopted?

With the TM-QTL project finishing, the question is how this information will be promoted to the industry. Lutz will also be talking about the pros and cons of genetic markers, and how they can be incorporated into breeding programmes.

9.45 **Catherine Nakielny**, *KN consulting, Talley, Carmarthenshire. catherine@knconsulting.co.uk*

The effect of sheep genetic improvement programmes on methane emissions

A HCC-funded project will be the basis of this talk. Four typical sheep systems were modelled to see how genetic improvement could reduce methane emissions. The project also tried to identify the most appropriate traits for selection within the different systems to reduce methane production.

10.05 **Neil McKintosh**, *Researcher, IBERS, Aberystwth. nnm08@aber.ac.uk*

Liver fluke - the new challenge

Liver fluke is becoming more and more of a challenge with 50% of lamb livers being condemned. The added problem is the risk of the drugs currently being used becoming less and less effective. Neil will provide some background information and details from his PhD and work on resistance.

10.25 Discussion

10.40 Coffee Break

11.10 6 : applied research

Chaired by Peter Morris, NSA

11.15 **Laura Green**, *School of Life Sciences, University of Warwick. Laura.Green@warwick.ac.uk*

Mastitis in ewes - what have we learnt in the last two years?

EBLEX-funded projects will be the basis for this talk. Laura is supervising three PhD students researching mastitis in ewes. She will discuss their findings on teat lesions, udder conformation, feeding levels and ewe age. She will also mention selection criteria to reduce the occurrence of mastitis.

11.40 **Julie Finch**, *Innovis, Aberystwyth. jmf@innovis.org.uk*

Lamb Losses - where do they go?

Julie will talk about a HCC-instigated project that has been investigating lamb losses through the 2011 season. The results will be used to direct knowledge transfer activity.

12.05 **Charlie Morgan**, *Grassmaster consultant, Glasbury on Wye, Herefordshire. charliemorgan462@btinternet.com*

What grass and forages will you be growing in ten years?

The focus of this talk will be new traits that grass breeders are looking for, and how they can be used in ram production systems. It will also look at novel forages that have potential to cope with climate change.

12.30 Discussion

12.50 **Jonathan Barber**

Chairman's Closing Remarks followed by lunch

