



The sheep industry in 10 years

A commercial breeders perspective

Future sheep farms---formative influences

- Customer perception & demands
- Welfare ---real or otherwise
- Environmental impact
- Taste ,texture ,“feel good value”
- Market forces
- Increased demand for protein
- Developing competition
 - Alternative protein
 - Other lamb sources

*what it means for
breeders/researchers*



- Genetics---change of emphasis
- Welfare
- Environment
- Meat quality
- Measurement
- BLUP
- Genomics
- Proxy measurements
- Breeding under pressure

Health & Welfare Traits



Avoiding The 3 'D's Drenching/Dagging/Docking



Health & Welfare Traits



Avoiding The 3 'D's

- Worms
- Wool cover
- Tail mutilation
- #1 killer /disease of sheep
- Dags/bare breach
- It's avoidable

Worms



- #1 welfare problem, cause of death, reduction in profit
- Poor take-up by breeders
- Historical use of FEC
- Emerging use of IgA serum



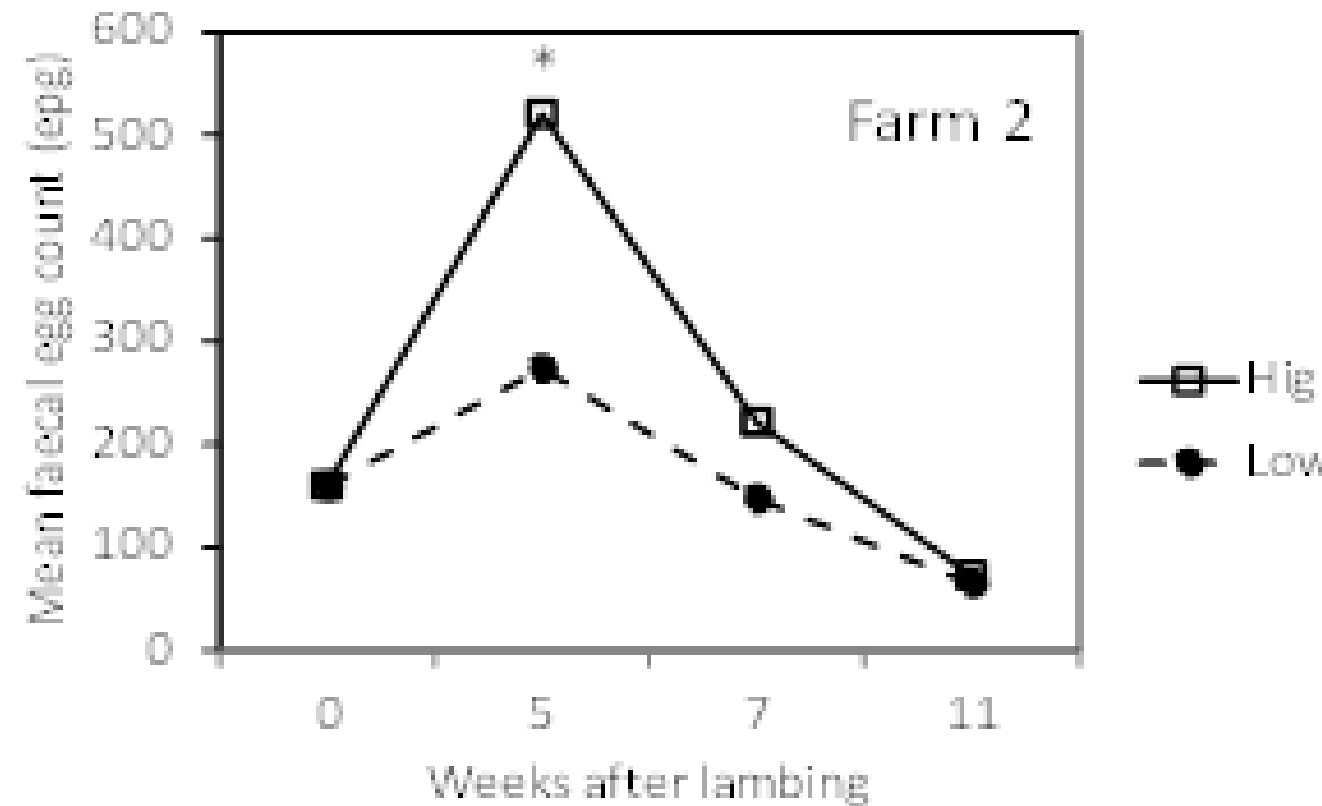
#1 --Worms



- #1 welfare problem, cause of death, reduction in profit
- Poor take-up by breeders
- FEC 0.01
- IgA 0.3
- Breeding under pressure
- Make it a priority trait
- Traditionally difficult to measure
- Slow to improve –so get on it now
- Lazy sheep breeders carry much of the blame

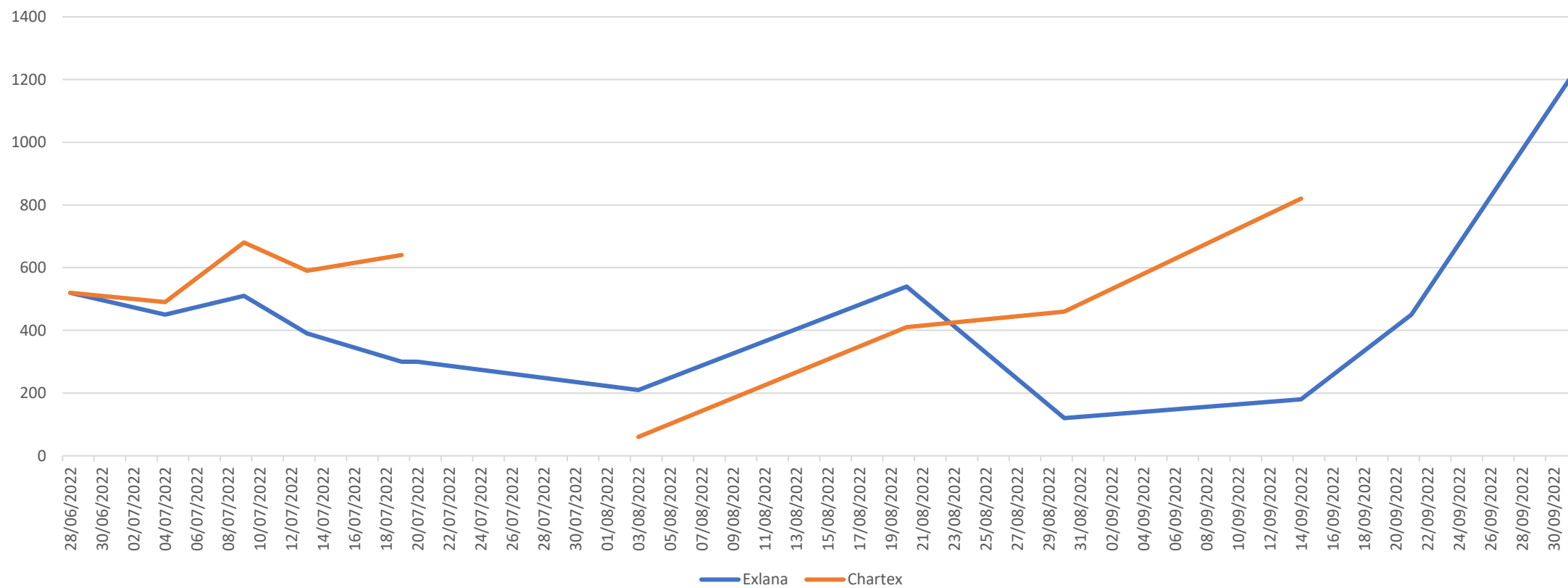
FEC

- 2014 – Top 20% FEC EBV ewes shed 50% of the eggs that bottom FEC EBV ewes shed





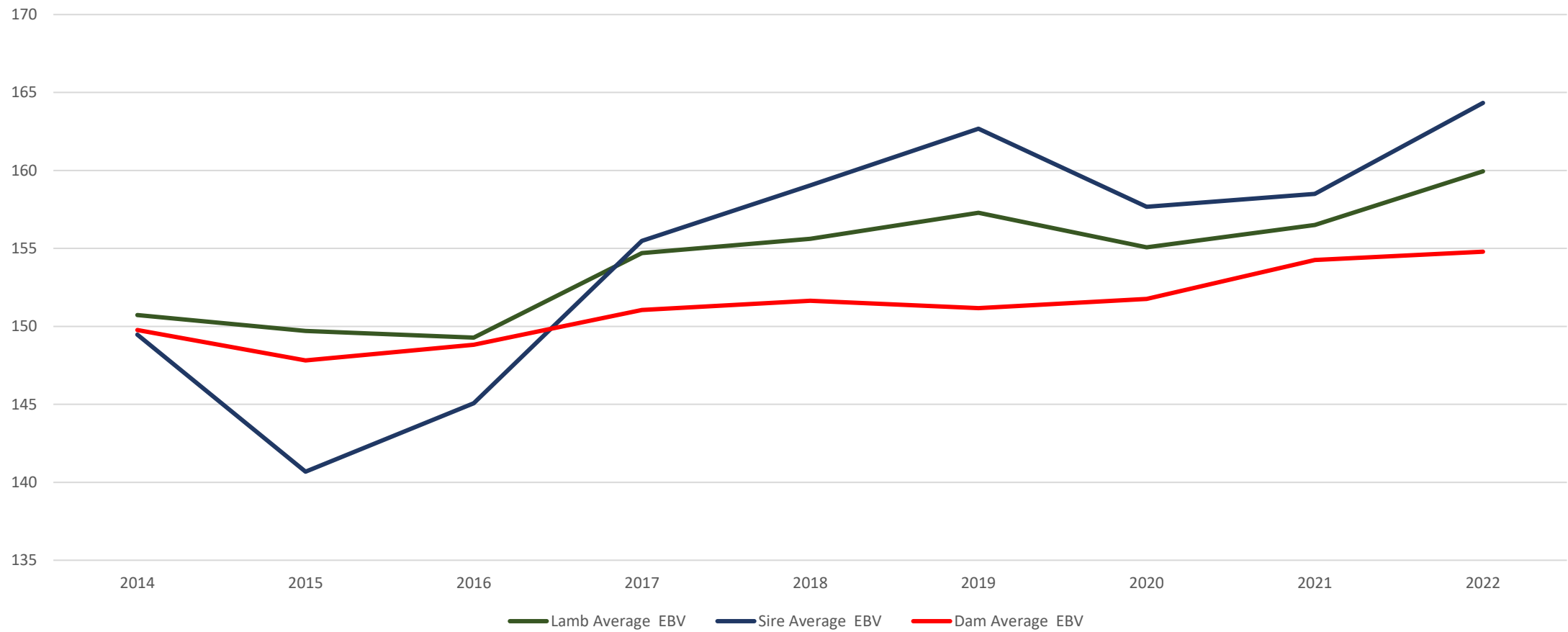
Lamb FEC 2022



Parasite Plus Trend



Parasite Plus (SI) Genetic Trend for EXLANA Breed



Wool--reducing the burden



- £££
- Environmental
- Welfare



Daggs/tails/dirty bum costs

3.06 per ewe						
	cost/ewe rate	flock size	rate	day rate/labour	gather	labour cost
		240		120		
Strike prevention	0.95	1	240	0.5	60	288.17
Dag	0.65	1	240	0.5	60	216.00
lamb strike prevention	0.95	1	360	0.5	60	231.13
					Total	735.30
					Cost per ewe	3.06

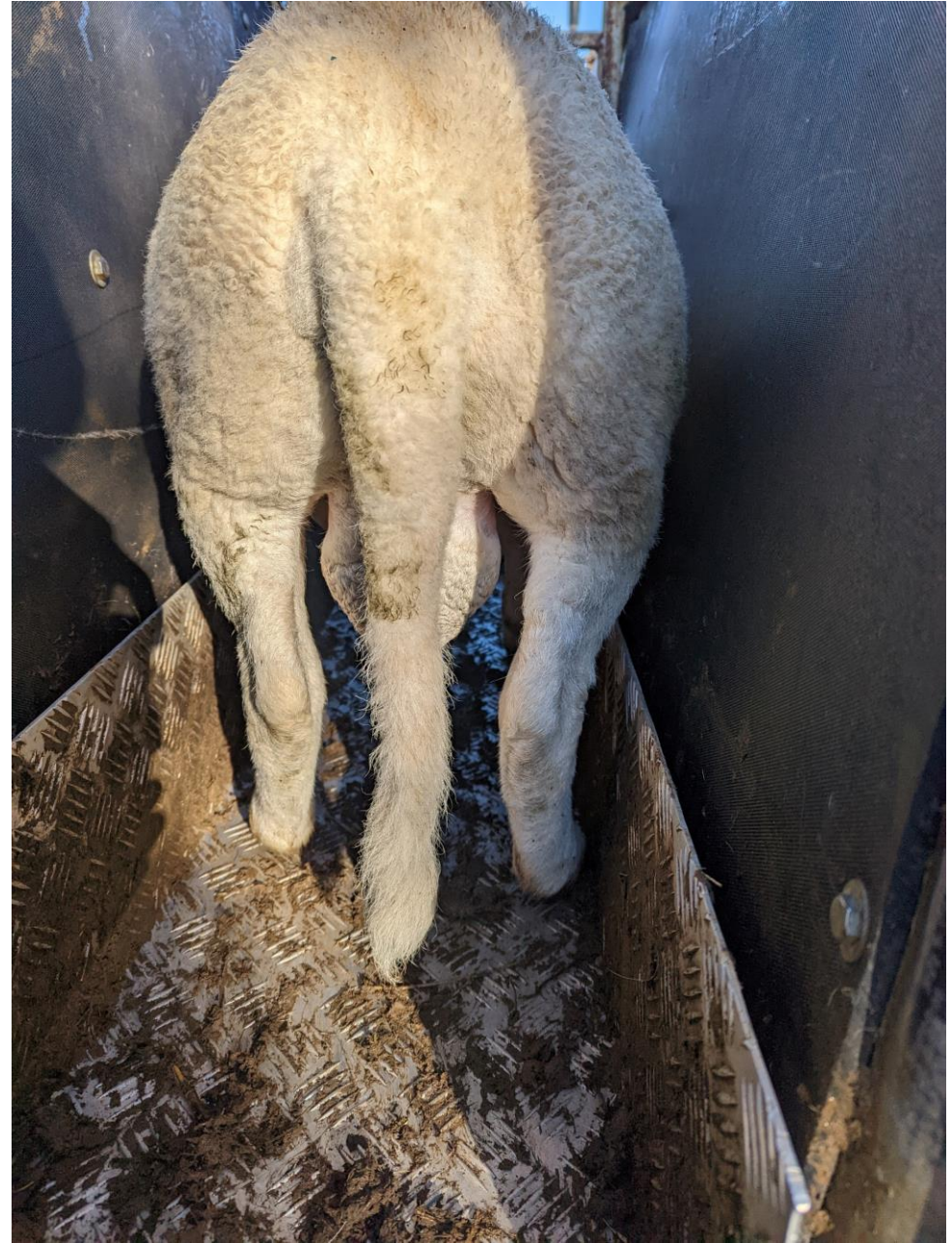
Reducing Tail mutilation---why?

- Increase welfare standards
- Reduce work
- Reduce infection potential
- Comply with market demands
- Easy to measure
- High heritability

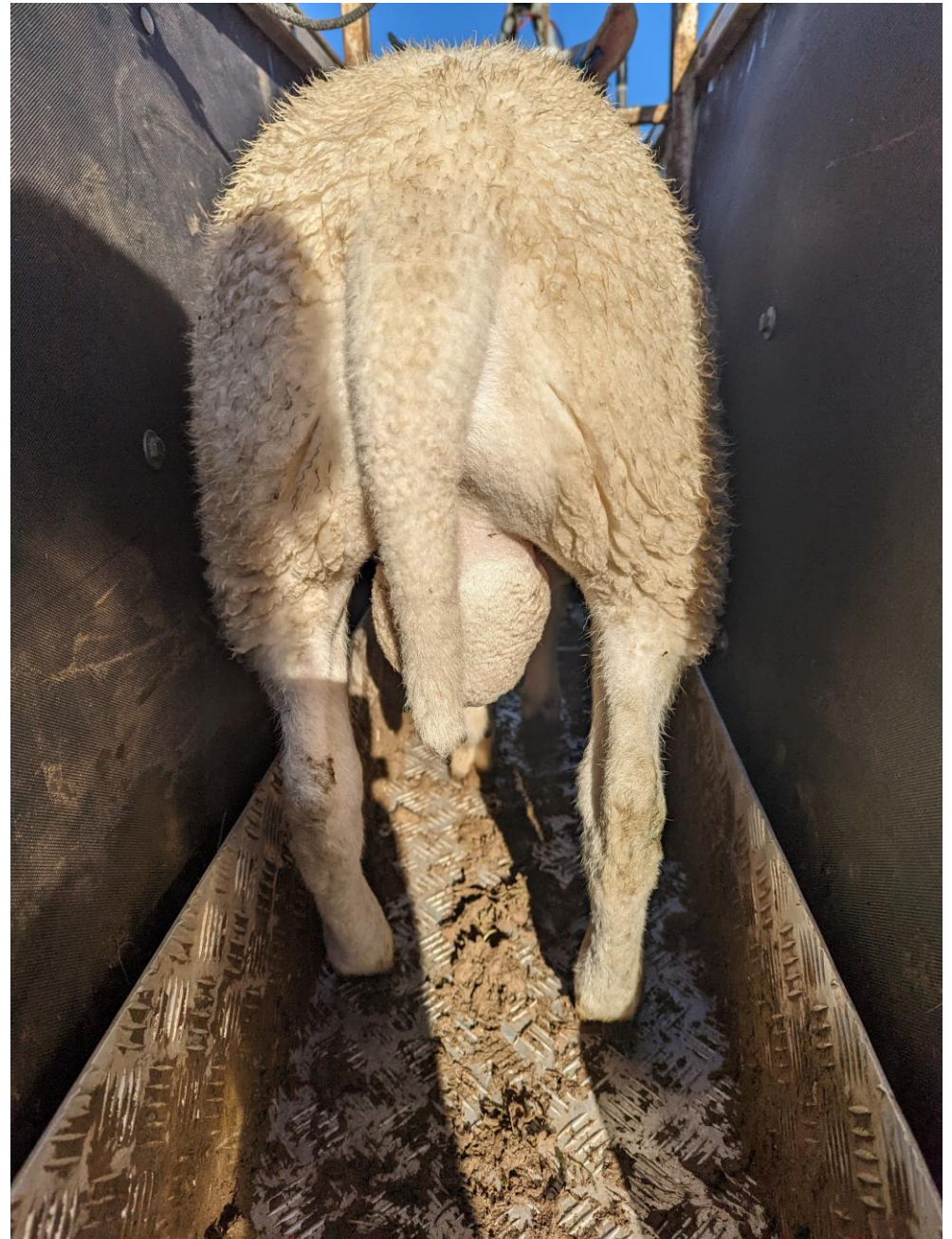


- Customer perception of welfare
- Common sense
- Reduce flystrike risk, rectal prolapse, joint ill
- EU regs
- Do it—it's easy
- Fast progress



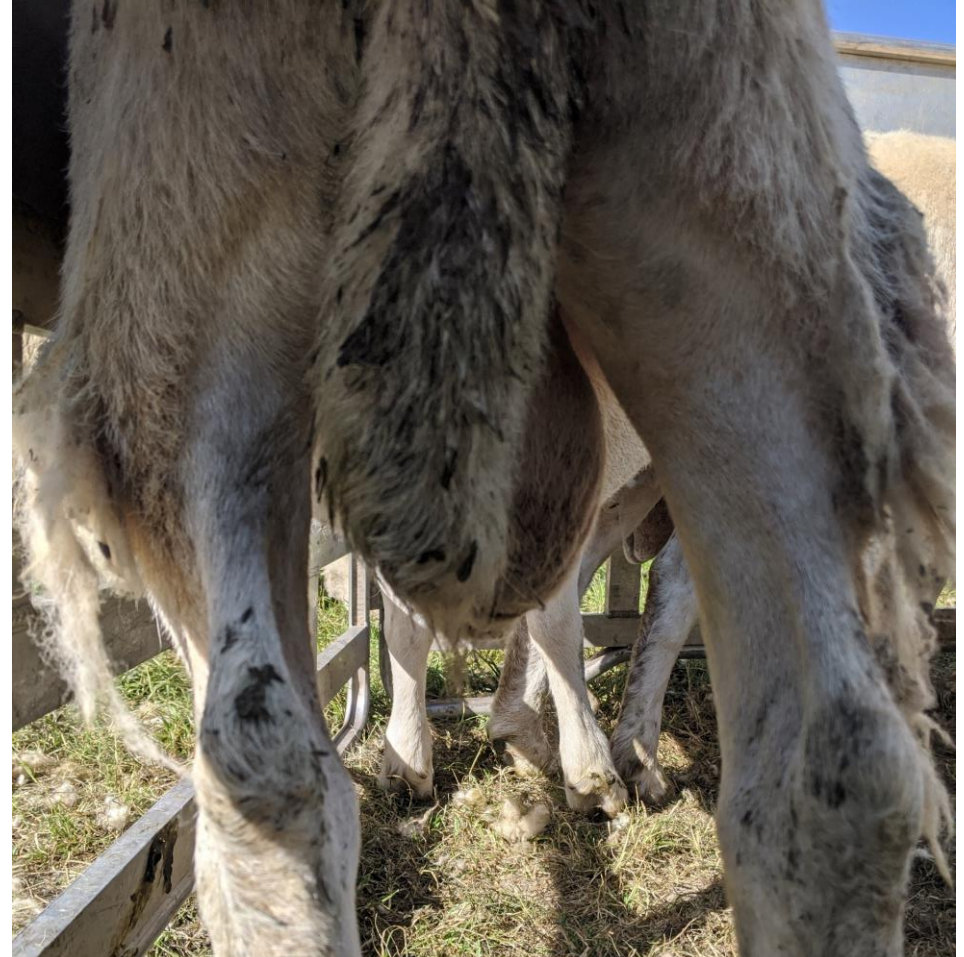








- Dagg scoring operates in the same manner



Dagg scores



0



1



2



3



4



5

Key points



Health and welfare traits are ---

- Essential but overlooked by breeders
- Often simple and fast to improve
- Highly visible
- Make great publicity for an industry that is heavily scrutinised

Cost Of Harvest/Protection		<u>5.06</u> per ewe				
	cost/ewe rate	flock size	rate	day rate/labour	gather labour	cost
Strike prevention	0.95	1	240	0.5	60	288.17
Shear	1.5	1	240	1	120	480.00
Dag	0.65	1	240	0.5	60	216.00
lamb strike prevention	0.95	1	360	0.5	60	231.13
				Total		1215.30
				Cost per ewe		5.06